



**SAFEDECISIONS**  
FOR EVERYTHING THAT YOU HOLD CLOSE

BELIEVE IT OR NOT, THERE'S AN EVEN TOUGHER TEST OF ELSAFE SECURITY

# UL 1037 Category Tests



## Physical break-in test

In this test, an experienced team was given free reign with a selection of tools to try and physically compromise the safe within a set period of time.



## Endurance test

This test consisted of over 6,000 openings and closings, as well as 50 battery changes. With an average battery life of over 2 years, this represents approximately 100 years of normal everyday usage!



## Jarring test

In this dramatic demonstration, the Infinity was actually hit with a steel ball to see if the physical structure and electronic components could withstand such excessive force. The Elsafe Infinity was successful in passing all the prescribed UL testing procedures and became the first in-room safe to achieve a 1037 category listing.



## How UL-listing benefits you!

The exclusive UL-1037 listing achieved by Elsafe's Infinity II Series and Sentinel II Series gives you added assurance that your valuables are receiving the maximum level of protection possible. Since many security safes on the market today can be easily opened within 30 seconds by experienced thieves, it is important to know that the Elsafe has passed extensive testing by the world's most prestigious, professional testing organization.

## ASSA ABLOY Elsafe's Infinity series and Sentinel series safes are the first in-room safes to pass the rigorous UL break-in test.

Elsafe's high standards of safety and security have been put to the test under the toughest conditions you can imagine. Since 1979, our own inhouse testing facilities and product development professionals have dreamed up every way possible to break into our safes. We've tested other safes too and learned from their weaknesses to continuously improve our products.

With the development of our revolutionary Infinity II series, we felt we had created an in-room electronic safe that was virtually impossible to compromise. However, we knew no one would ever take our word for it. Why should they? After all, every manufacturer says they have quality. So, we took our safe to the world's most recognized and respected product testing organization... and we made believers out of them.

After enduring rigorous testing procedures by Underwriters Laboratories, the Infinity Series became the first UL-listed in-room safe in the 1037 category for safety and security. But we weren't surprised. After all, we had already passed the toughest test of all – our own. Then in 2003, our SENTINEL series followed and was awarded the same UL listing.

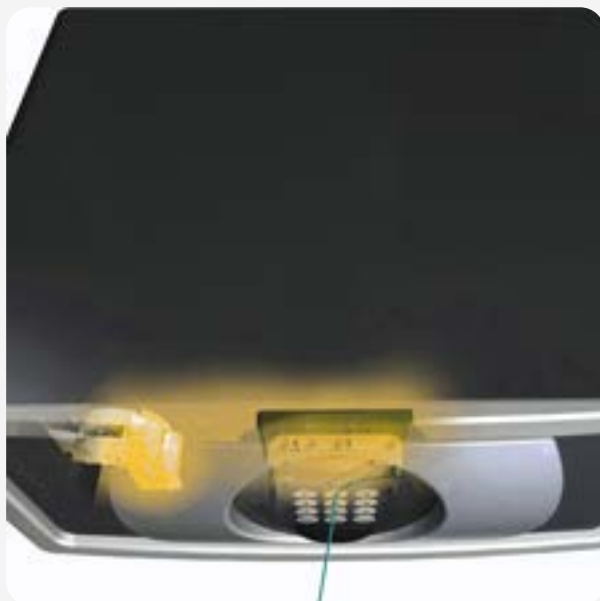






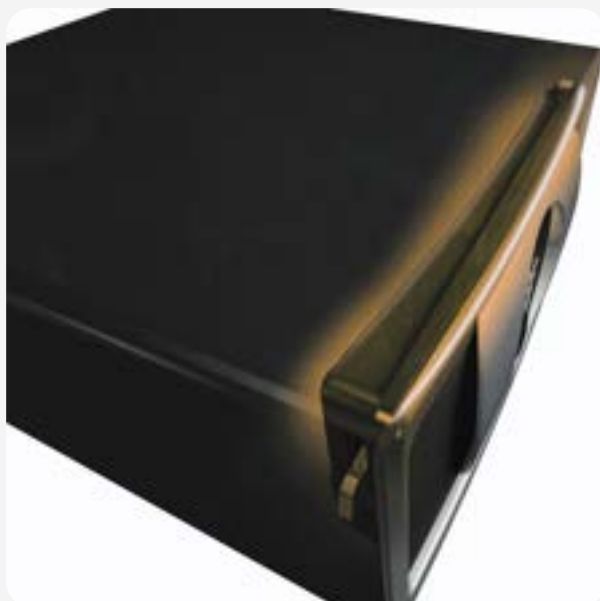
### **Elsafe's revolutionary locking system best resists forcible entry**

Specially designed latch teeth engage both the door and frame if there is any attempt to force the door open.



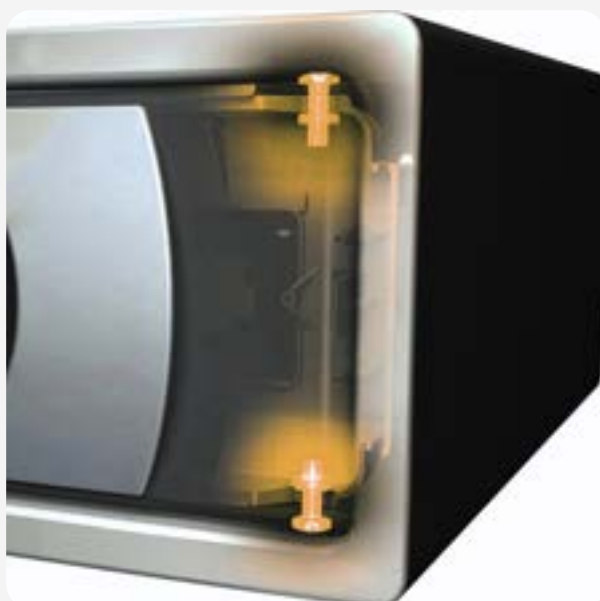
### **Anti-tamper labyrinths protect our safe's electronics from manipulation**

Ingenious design protects electronics and the safe's mechanisms from even the slenderest probes.



### **One piece coldpressed door is over 70% stronger than sheet steel**

Infinity II and SENTINEL's II curved door profile and integral dished front are coldpressed in our own factory, making it by far the strongest and most secure door in its class!



### **Extended solid steel bolt hinges are secure and ultra reliable**

The oversized solid steel hinges are arc-welded permanently to the door, so they are virtually impossible to force out from the door frame.



## Who is Underwriter's Laboratories?

For well over a century, Underwriters Laboratories, Inc. has been assessing a wide scope of consumer products for safety and reliable operation. Founded in 1894 in the United States as an independent, not-for-profit product safety testing and certification organization, UL has earned their undisputed reputation as the world's most prestigious and reliable product safety testing facility.

Currently, the highly recognizable UL symbol has been placed on over 17 billion products in over 92 countries around the globe. For more information, please visit [www.ul.com](http://www.ul.com).

### EXCLUSIVE

The Only UL-1037 Certified Safes on the Market

### ROBUST

Over 70% Stronger Than Sheet Steel



### UNBREAKABLE

Anti-Tamper Labyrinths  
Protection from Manipulation

**SAFEDECISIONS**  
FOR EVERYTHING THAT YOU HOLD CLOSE

1739 NW 79 Avenue,  
Doral FL 33126 | United States

Email: [Support@SafeDecisions.com](mailto:Support@SafeDecisions.com)  
Tel.: 212-563-1111 | Fax: 212-563-1114

[www.SafeDecisions.com](http://www.SafeDecisions.com)

